

Basic Menu Math Software

PCI950

Mac/Win CD.

Product Type: Software

Teacher's Guide: Yes

Author: Janie Haugen

Number of Disks: 1

Reading Level: Low level reading

Age Appropriate Level: Elementary, Middle and High School, Adult, Special Ed

Reproducible: No

Copyright: 1999

System Requirements: Windows 486–66DX or higher, 12 MB RAM, Windows 95/98/NT 4.0, 256 colors, 67 MB of free hard-disk available space, CD-ROM drive. Macintosh Quadra 650 or higher, System 7.6 or higher, 16 MB RAM, 256 colors required, 72 MB of free hard-disk available space, CD-ROM drive

An interactive version of PCI's popular *Basic Menu Math*, this software version recreates the fun and excitement of eating out combined with learning necessary, "real-life" practice in ordering from menus and figuring the cost of meals. Skillfully produced in an engaging game format, *Basic Menu Math Software* provides hours of fun while improving independent math skills, basic reading skills, and sight reading skills. Full-color food illustrations and voice narrations make the program ideal for individuals who have limited or no reading skills.

PCI's Janie Haugen developed the creative, colorful, and high-interest *Basic Menu Math* programs after observing students in her class struggling to order within their personal budgets at three types of restaurants. In *Basic Menu Math Software*, students are given lists of foods and drinks to buy, and then use the menus to determine the total cost of meals. Featured restaurants include:

- Fast Food: Biggie Burger and Chicken Basket.
- Restaurant: American Café and Around the World.
- Cafeteria: Mom's Cafeteria.

Students select the type of food and the specific restaurant they want to visit. If a student has already completed all of the activities for a particular restaurant, that sign appears gray and the student is not allowed to choose it. Upon entering a restaurant, the student hears a short introduction, and a worksheet appears on the screen. As students select the first food or drink item, they hear the name of the menu areas read aloud by placing the cursor over each icon. Voice prompts cue the players when incorrect choices are made.

When the correct menu item is chosen, a large icon of the food or drink item appears with one or more price choices. The student clicks on the correct price, as well as any specific selections (size, flavor, etc.). After the correct price is chosen, the program returns to the worksheet. The student repeats the above process until he or she has assigned prices to all menu items on the worksheet.

When all food and drink items have been filled in, three "total" amounts appear in the menu area. Students add the prices from the worksheet, either mentally or using a calculator, and clicks on the correct total price. After the student has chosen the correct "total," a new worksheet appears. This process continues until the student completes all of the worksheets in a specific restaurant, or the student clicks the Return or Click button.

Teacher's Guide. A booklet provides detailed instructions for playing the *Basic Menu Math Software* game, including explanations on how to start a new game, save a game under each student's name, and continue a previous game. The guide also features instructions for using the assessment tool part of *Basic Menu Math Software*, which tells the teacher how many times the student had to click before selecting the correct icons in each category (menu, item, price, and answer). The date and time that the math problems were completed appears after each worksheet assignment, and assessments for users can be printed.

Special Features

This CD version of *Basic Menu Math* is also available separately with one *Money Calc* to help students with addition.

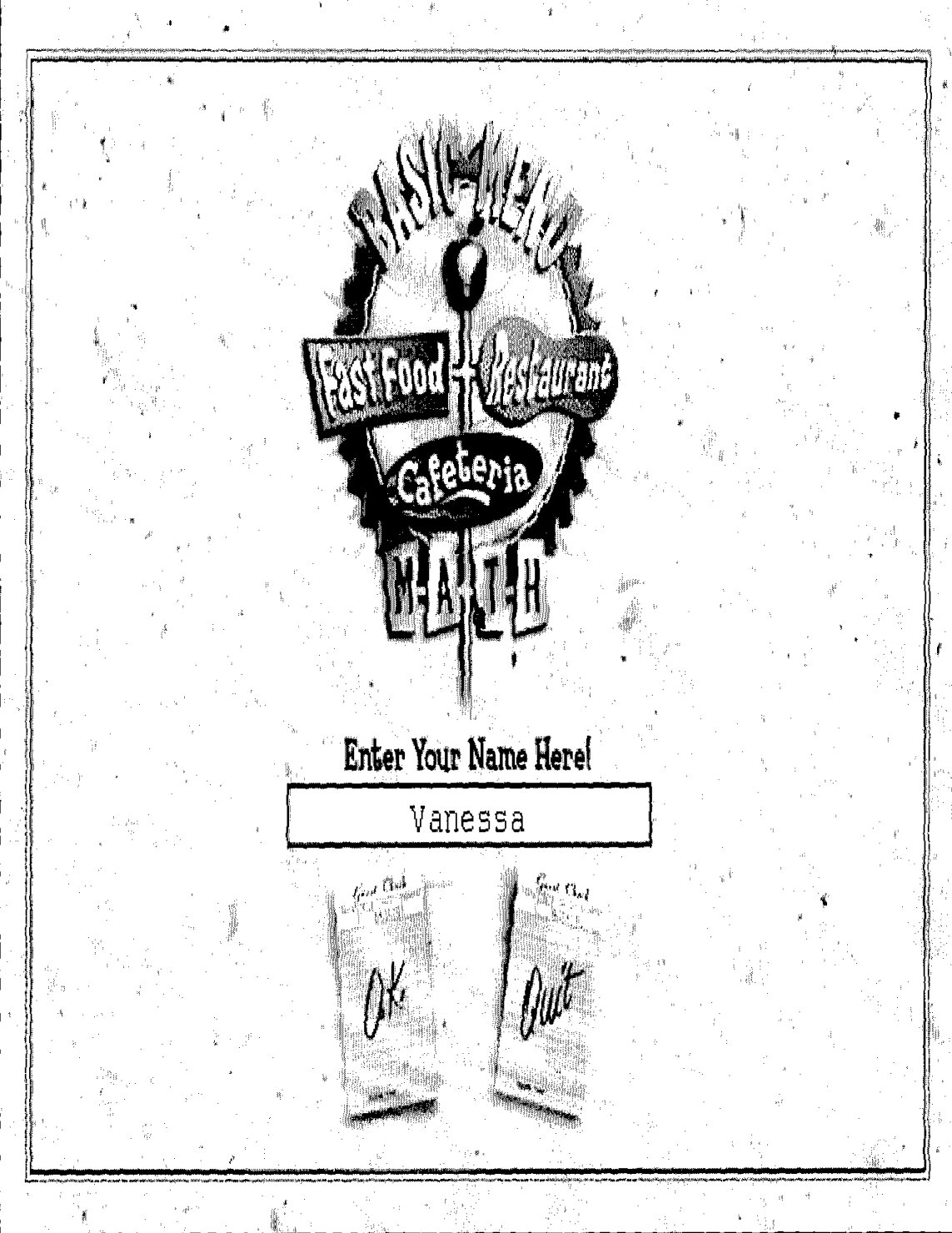
About the Author

Janie Haugen, B.S.E., is senior vice president and executive editor at PCI Educational Publishing. She draws on her years of teaching and administrative experience to develop "real-life" innovative programs that teach life skills to persons with and without developmental disabilities. They are proven effective in elementary inclusion programs, secondary life skills courses, adult basic skills classes, and in a wide range of other learning environments. Her teaching methods benefit people of various ages and educational abilities who need a "hands-on" approach to learning.

PCI950 Mac/Win CD \$99.95

Related Item:

PCI951 Basic Menu Math Software - Mac/Win CD w/Money Calc \$118.95



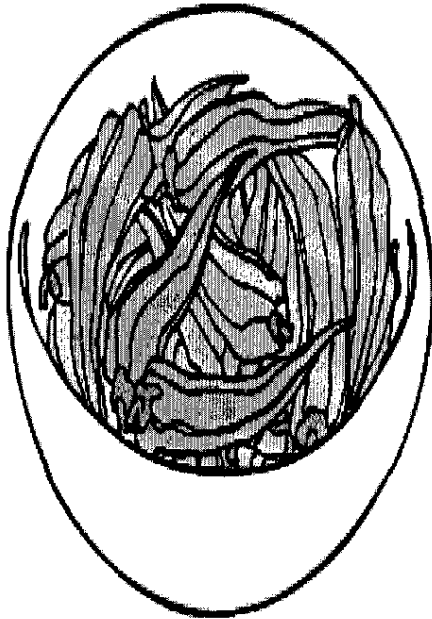
Enter Your Name Here!

Vanessa

Fast Club
OK

Fast Club
Dut

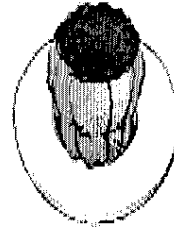
MOM'S CAFETERIA



Okra \$.69

08

Stuffed Bell Pepper



\$3.29

Okra



Iced Tea



Pecan Pie



TOTAL

MENU

RETURN

REPEAT

HELP

QUIT

★ AMERICAN CAFE ★

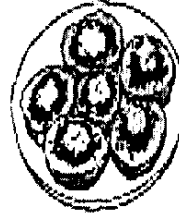
FIND THE CORRECT
TOTAL PRICE

\$9.59

\$8.81

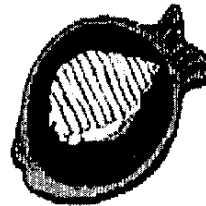
\$10.34

Potato Skins



\$3.60

Fish



\$4.10

Green Peas



\$0.89

Soft Drinks



\$1.00

TOTAL

MENU

RETURN

REPEAT

HELP

QUIT